

November 5, 2018

PRODUCT CHANGE NOTIFICATION – New Blind Corner Hinge

As part of our continual improvement practices, we are implementing a new hinge for the Blind Corner Cabinet, opening up the option for a Soft Close Hinge upgrade. Effective for orders with a production date starting December 1, 2018, the new hinge will mount to the back of the blind panel and clip to the hinge plate allowing for the availability of both a standard or soft close hinge.

SPECIFICATIONS

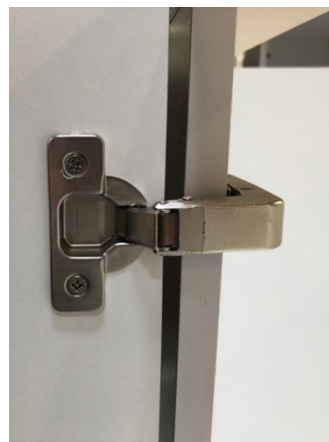
CURRENT BLIND HINGE



Side View

- Mounts to the edge of the blind panel
- No clip-on feature
- Not available with the soft close option

NEW BLIND HINGE



Side View



Back View

- Mounts to the back of the blind panel
- Hinge clips to plate similar to standard hinges
- Available with the soft close option

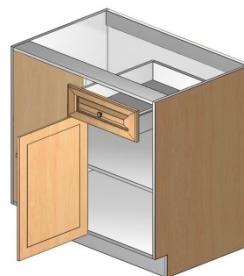
CABINET MODEL NUMBERS

Base Blind Corner Cabinet (BBF)



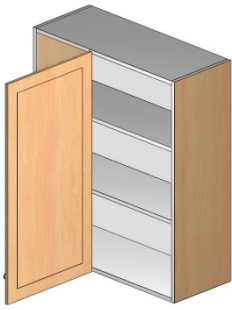
WIDTH INCHES	MODEL NUMBER
36	BBF36 L/R
39	BBF39 L/R
42	BBF42 L/R
45	BBF45 L/R
48	BBF48 L/R
51	BBF51 L/R

Base Blind Corner Cabinet with Drawer (BB)



WIDTH INCHES	MODEL NUMBER
36	BB36 L/R
39	BB39 L/R
42	BB42 L/R
45	BB45 L/R
48	BB48 L/R
51	BB51 L/R

Wall Blind Corner Cabinet with 1 Door (WC)



WIDTH INCHES	30" HEIGHT	36" HEIGHT	39" HEIGHT	42" HEIGHT
24	WB2430 L/R	WB2436 L/R	WB2439 L/R	WB2442 L/R
27	WB2730 L/R	WB2736 L/R	WB2739 L/R	WB2742 L/R
30	WB3030 L/R	WB3036 L/R	WB3039 L/R	WB3042 L/R
33	WB3330 L/R	WB3336 L/R	WB3339 L/R	WB3342 L/R
36	WB3630 L/R	WB3636 L/R	WB3639 L/R	WB3642 L/R

Wall Blind Corner Cabinet with 2 Doors (WB)



WIDTH INCHES	30" HEIGHT	36" HEIGHT	39" HEIGHT	42" HEIGHT
39	WB3930 L/R	WB3936 L/R	WB3939 L/R	WB3942 L/R
42	WB4230 L/R	WB4236 L/R	WB4239 L/R	WB4242 L/R
45	WB4530 L/R	WB4536 L/R	WB4539 L/R	WB4542 L/R

EFFECTIVITY DATE

Orders produced on or after December 1, 2018

SALES and QUOTE TOOLS

Be sure to reference the publish dates for sales and quote tools reflecting this change and update your catalog and files accordingly.

- Excel Distributor Quote Form – Publish Date November 12, 2018
- 2020 Design Catalog – Updated catalog to be published on November 12, 2018

PART NUMBERS FOR NEW BLIND HINGES AND HINGE PLATES

PART NUMBER	DESCRIPTION
HGSTDBL	STANDARD BLIND CORNER HINGE
HGSCBL	SOFT CLOSE BLIND CORNER HINGE
HGSTDBLP	STANDARD BLIND CORNER PLATE
HGSCBLP	SOFT CLOSE BLIND CORNER PLATE

REPLACEMENT PARTS FOR THE CURRENT BLIND HINGE

PART NUMBER	DESCRIPTION
HGFSTD	FRAME HINGE PLATE OVERLAY